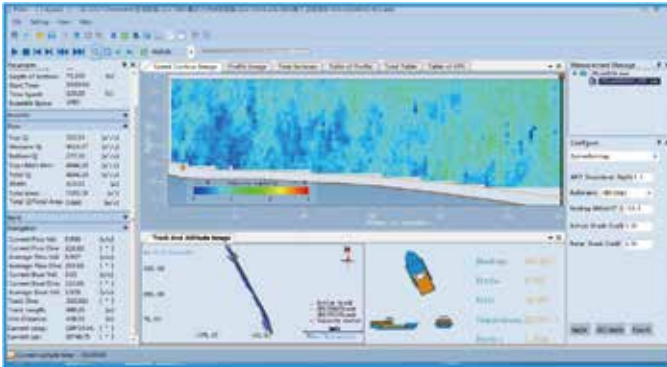


# iFlow RP600/1200

## 600kHz & 1200kHz Piston Acoustic Doppler Current Profiler

- Provides accurate measurement with a 75 meter range, the 600kHz frequency ADCP iFlow RP600 can be widely used for monitoring and surveying rivers, lakes, channels, etc. .

### KEY FEATURES



#### Long Profiling Range Multiple Cells.

600Hz working frequency extends the current measurement range up to 75 meter with maximum 256 cells.



#### Multiple Working Mode

The iFlow RP600 support vessel has mounted, bottom-tracking, monitoring, DVL and self-contained modes.



#### Multiple Built-in Sensors

Integrating the gyro, temperature, pressure and tilting sensor, iFlow RP600 offers multiple source of information for the operation reference.



#### Easy to Use Software

Clear software working flow and UI lower the learning curve, making it easy to use.



#### High Precision Current Measurement

Supported by broadband signal processing technology, the anti-noise level has been improved while the current measurement accuracy can be up to  $0.25\% \pm 0.25\text{cm/s}$ .

### SPECIFICATIONS

Hi-Target iFlow ADCP Specifications	RP600	RP1200
System Frequency	600kHz	1200kHz
Type of Transducer	Piston	
Beam	Janus 4 beams at 20° beam angle	4 Janus beams at 20° beam angle, 1 vertical for depth measurement
Velocity Range	Typical: $\pm 5\text{m/s}$ , Max: $\pm 20\text{m/s}$	
Velocity Profile Range	1-80m	0.2-25m
Velocity Resolution	1 mm/s	
Cell Number & Cell Size	1-260 ; 0.1-4m	1-256 ; 0.1-2m
Measurement Accuracy	$0.25\% \pm 0.25\text{cm/s}$	
Operation Mode	Broadband	
Bottom-track Range	0.8-90m	0.15-35m
Internal Storage	8Gb(Standard), optional for 16Gb	
Built-in Sensors	Temperature, tilt(pitch and roll), compass and pressure	
Carrier	Three hulls trimaran float, or iBoat BS3 USV	